



CAR SEAT ————— SELECTION

Yu-City Fabric Sample





24KD001
24KE018

Knitting Eco-Friendly Fabric

Embrace the Earth, Embrace Comfort, Embrace the Unique Charm of Eco-friendly Fabrics

This season, Yu-City offers three eco-friendly options. Firstly, recycled fabrics are sustainable, reducing new material demand and pollution, while also offering unique styles.

Secondly, seaweed fabrics, nature's treasure, boast excellent breathability and moisture-wicking, ideal for sensitive skin. They're also antibacterial and hypoallergenic.

Lastly, blended fabrics combine different fibers' benefits, offering users strength and softness.

Choosing eco-friendly fabrics means contributing to the planet while enjoying comfort, health, and diverse styles.



24KK010

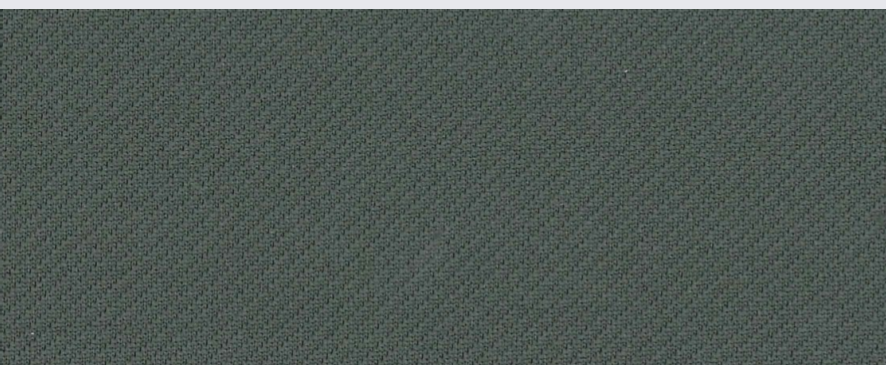
24KK010
23KE159

23KE159



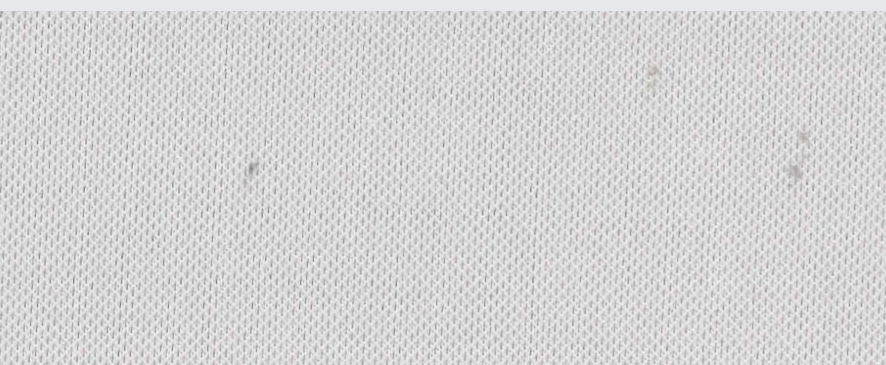
BCTW - 24KD001

CMPSTN : Seacell / Poly
 DESCRIPTION : T100D
 WIDTH/WEIGHT : 59" 190SQM
 FINISH : P/D
 REMARK : Two-tone ,
 Seaweed Cellulose fibre



YCTW - 24KE018

CMPSTN : 100% Recycle Poly
 DESCRIPTION : RE-T75D
 WIDTH/WEIGHT : 62.5" 160SQM
 FINISH : P/D
 REMARK : 20% Garment recycle /
 80% Recycle Scrap and cutting waste



YCTW - 24KE019

CMPSTN : 100% Recycle Poly
 DESCRIPTION : RE-T75D
 WIDTH/WEIGHT : 60.5" 158SQM
 FINISH : P/D
 REMARK : 20% Garment recycle /
 80% Recycle Scrap and cutting waste



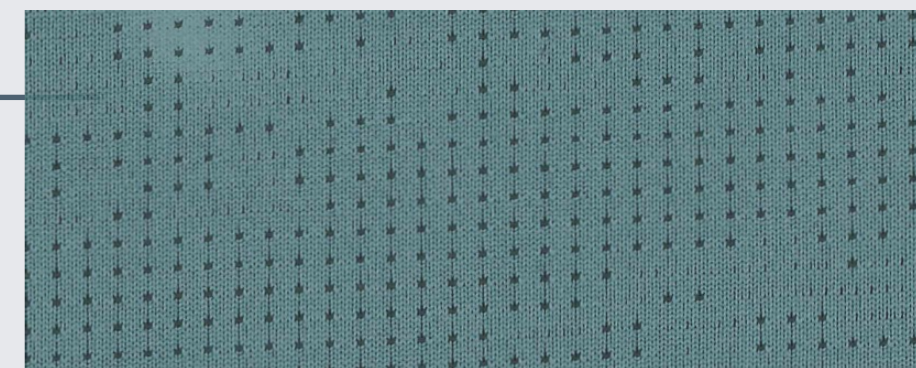
BCTW - 24KE004

CMPSTN : 100% RE-Poly/CD
 DESCRIPTION : RE-T/CD100D + 30DOP
 WIDTH/WEIGHT : 58" 184SQM
 FINISH : P/D
 REMARK : ECO-Friendly



BCTW - 24KE006

CMPSTN : 100% RE-Poly/CD
 DESCRIPTION : RE-T/CD150D + RE-T150D
 WIDTH/WEIGHT : 61" 165SQM
 FINISH : P/D
 REMARK : ECO-Friendly



BCTW - 24KE005

CMPSTN : 100% RE-Poly/CD
 DESCRIPTION : RE-T100D+RE-CD75D+30DOP
 WIDTH/WEIGHT : 61" 165SQM
 FINISH : P/D
 REMARK : ECO-Friendly



BCTW - 24KE007

CMPSTN : 100% RE-Poly
 DESCRIPTION : RE-T/CD150D + RE-T/CD100D
 WIDTH/WEIGHT : 60" 175SQM
 FINISH : P/D
 REMARK : ECO-Friendly



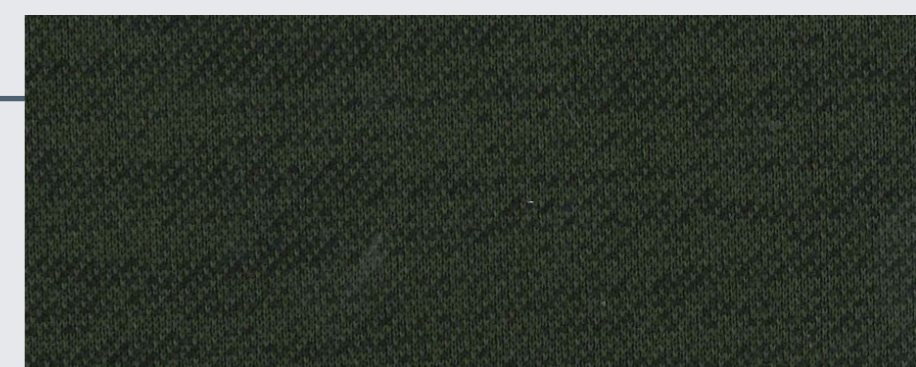
YCTW - 24KE016

CMPSTN : RE-Poly / Poly
 DESCRIPTION : RE-T300D + RE-T150D + T100D
 WIDTH/WEIGHT : 57" 219SQM
 FINISH : P/D
 REMARK : ECO-Friendly



YCTW - 24KE020

CMPSTN : RE-Poly / Poly
 DESCRIPTION : T75D + RE-T/CD75D
 WIDTH/WEIGHT : 66" 196SQM
 FINISH : P/D
 REMARK : ECO-Friendly



YCTW - 24KE023

CMPSTN : 100% RE-Poly & CD
 DESCRIPTION : RE-T/CD100D + RE-T100D
 WIDTH/WEIGHT : 58" 190GSM
 FINISH : P/D
 REMARK : Eco-friendly & Jacquard

Explore the Diversity of Fabric Textures: Fashion, Elastic, Comfortable – Each Texture Possesses its Own Charm.

This season, Yu-City has meticulously crafted a diverse range of fabric textures, each exuding its own unique feature, allowing you to freely showcase your design style.

We have specially introduced exquisite floral designs, adding personality and elegance to your designs. With boutique-like production processes and high-quality fabric textures, your products stand out from the crowd.

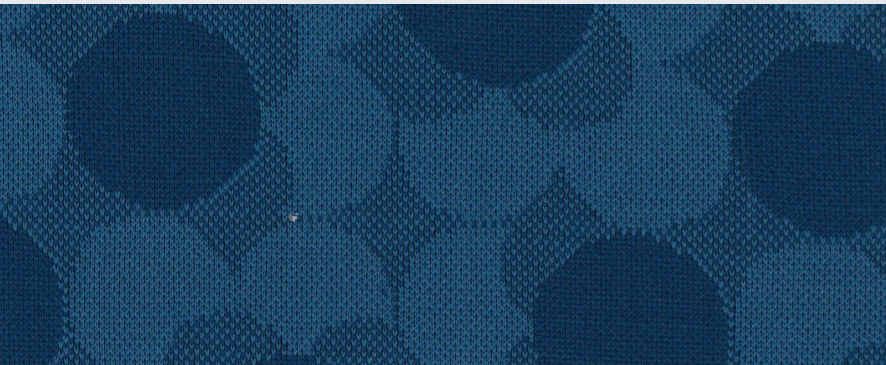
Whether you prefer the cotton-like feel or the cool smooth touch, Yu-City can meet your needs. Let's explore the diversity of fabrics together and create a fashion style that is uniquely yours!





BCTW - 24KD006

CMPSTN : 100% Poly
 DESCRIPTION : T100D + CD150D
 WIDTH/WEIGHT : 60" 240SQM
 FINISH : P/D
 REMARK : Two-tone , Jacquard



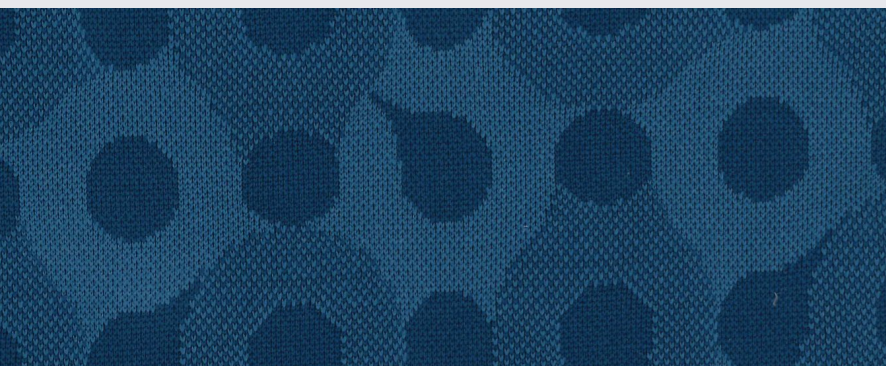
BCTW - 24KD007

CMPSTN : 100% Poly
 DESCRIPTION : T100D + CD150D
 WIDTH/WEIGHT : 60" 240SQM
 FINISH : P/D
 REMARK : Two-tone , Jacquard



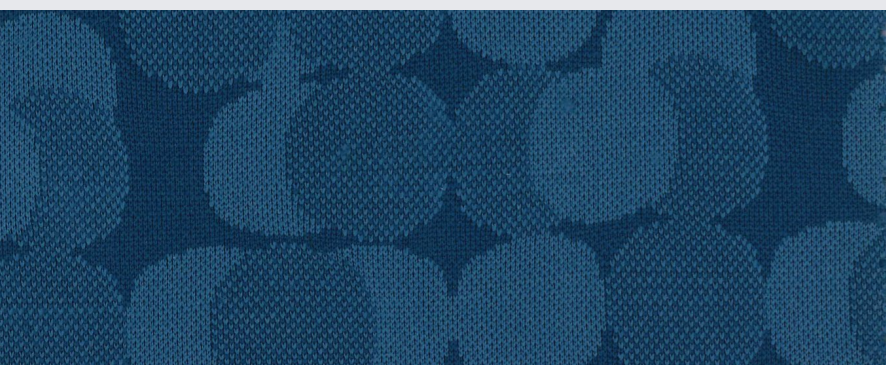
BCTW - 24KD002

CMPSTN : 100% Poly
 DESCRIPTION : T150D
 WIDTH/WEIGHT : 59" 190SQM
 FINISH : P/D
 REMARK : Two-tone , 302FR Free



BCTW - 24KD008

CMPSTN : 100% Poly
 DESCRIPTION : T100D + CD150D
 WIDTH/WEIGHT : 60" 240SQM
 FINISH : P/D
 REMARK : Two-tone , Jacquard

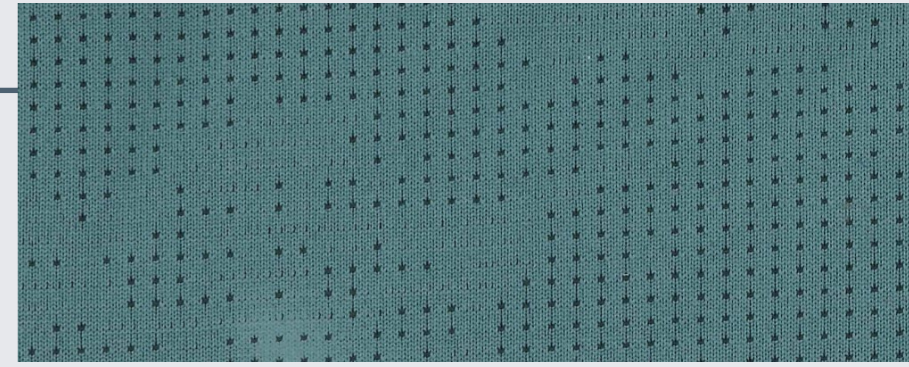


BCTW - 24KD009

CMPSTN : 100% Poly
 DESCRIPTION : T100D + CD150D
 WIDTH/WEIGHT : 60" 240SQM
 FINISH : P/D
 REMARK : Two-tone , Jacquard

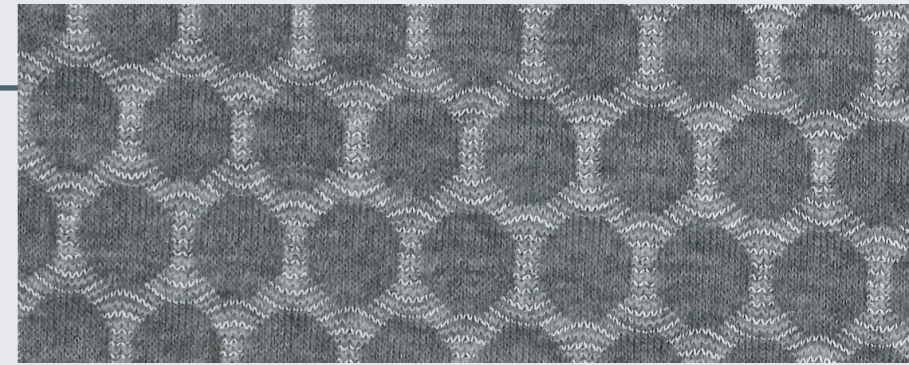
BCTW - 24KE005

CMPSTN : 100% RE-Poly/CD
 DESCRIPTION : RE-T100D+RE-CD75D+30DOP
 WIDTH/WEIGHT : 61" 165SQM
 FINISH : P/D
 REMARK : ECO-Friendly



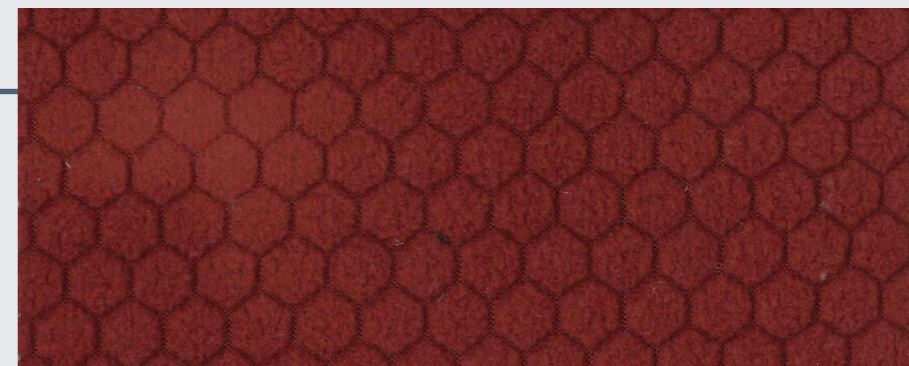
BCTW-24KK010

CMPSTN : 50% Rayon + 47%Poly + 3%Spandex
 WIDTH/WEIGHT : 61" 240SQM
 FINISH : P/D
 REMARK : Inlay , Two-tone



BCTW-24KP002

CMPSTN : 100% Poly
 DESCRIPTION : T100D
 WIDTH/WEIGHT : 62" 155SQM
 FINISH : P/D
 REMARK :



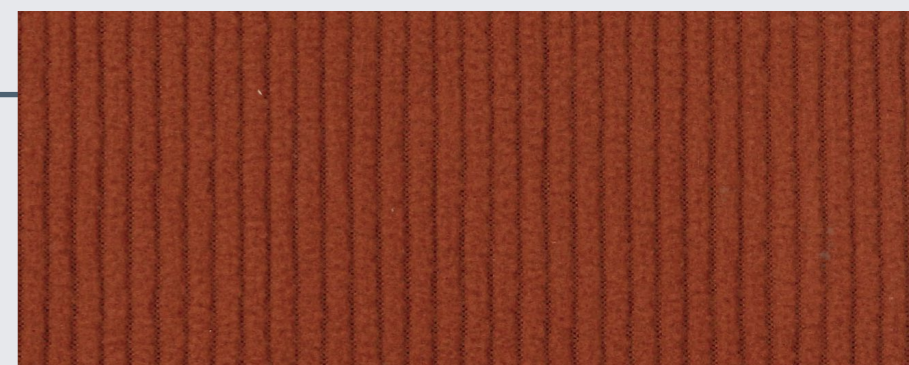
BCTW-24KP003

CCMPSTN : 100% Poly
 DESCRIPTION : T100D + T300D + T100D
 WIDTH/WEIGHT : 61" 280SQM
 FINISH : P/D
 REMARK :



BCTW-24KP027

CMPSTN : 100% Poly
 DESCRIPTION : T100D
 WIDTH/WEIGHT : 58" 180SQM
 FINISH : P/D + Fleece
 REMARK :





24KD001
24KE018



24WP015

Fireproof Durable Textile

Yu-City Industrial Co., Ltd. complies with global green chemistry laws and regulations, such as "AB-2998 Consumer Products: Flame Retardant Materials" of California Legislative Information in 2020, the European Commission's "Toy Safety Regulation" in 2023 to resolve the issue of hazardous chemicals used in textiles.

Yu-City particularly protects those vulnerable consumers, who are infants and children, for the top priorities. Y.C. also provides a safety and harmless environments for the applications of various textiles used in baby strollers, child car seats, children's toys and other diversified textiles by major brands in advance.

Our products have passed the certification of international standards for raw material tests, and are fully compliant with the laws and regulations of the series of polyurethane (PU) plus low phosphorus chemical flame retardant textiles in due course.

In order to do so, Yu-City is ready to comply with the laws and regulations for you – All Our Brand Customers!



24WE007
24KE008

Advisory Support

We share the latest industrial trends with our clients. We are capable of product marketing, story telling and business researching. Being a supplier is not our goal. What we are looking for is to be a part of your team. This is more than one-stop service, we cover all.

Full Services


We share the latest industrial trends with our clients. We are capable of product marketing, story telling and business researching. Being a supplier is not our goal. What we are looking for is to be a part of your team. This is more than one-stop service, we cover all.



23KP134
23KJ197



22KK015
21KK022



Yu-City Not Just Fabric, But Design

游城實業股份有限公司

YU-CITY IND. CO., LTD.

24158 新北市三重區新北大道二段 260 號 12 樓

12F, No. 260 Sec. 2, New Taipei Blvd., Sanchong District

New Taipei City, Taiwan (R.O.C.)

TEL: +886-2-29953199

FAX : +886-2-29959918



Yu-City



BLESSCOME