



STROLLER SELECTION

Yu-City Fabric Sample



yu-city



BLESSCOME



24WD022

High Quality Fabric

Discover Luxury : Unveiling the Beauty of High quality and Classic Melange Fabrics

Revealing the classic elements within these fabrics is an exploration of the beauty of fashion. From delicate textures to meticulously woven classic melange patterns, they showcase a unique and captivating style. From the gentle hues of melange to the two-tone blend, each fabric is a work of art, injecting endless charm into designs and products.

Exploring the beauty of the luxury world implies more of a lifestyle attitude. It signifies a pursuit of quality, an aspiration for refinement, and a reverence for the classics. Whether used in fashion or decor, high-quality fabrics and classic melange patterns are the epitome of showcasing brand style. Let us infuse elegance into every moment of life.

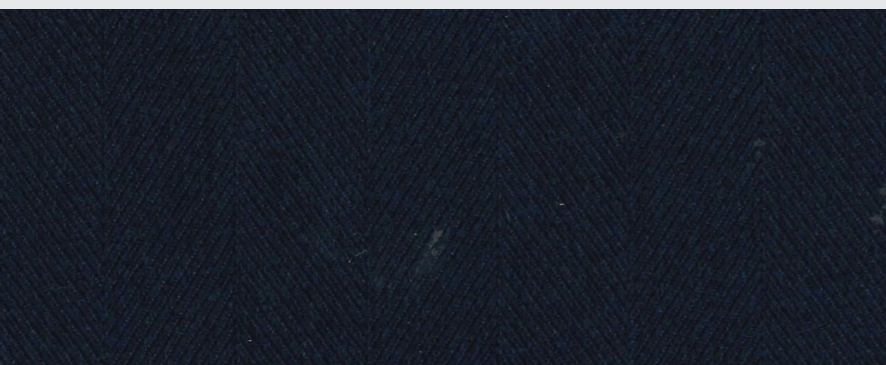


24WD019



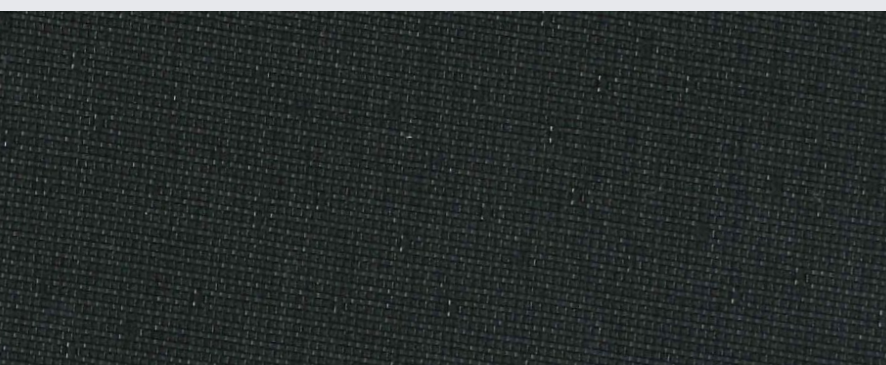
BCTW-24WD019

CMPSTN : 100% Poly
 DESCRIPTION : T200D*T300D
 WIDTH/WEIGHT : 59" 190SQM
 FINISH : PU + PU
 REMARK : Jacquard , Melange



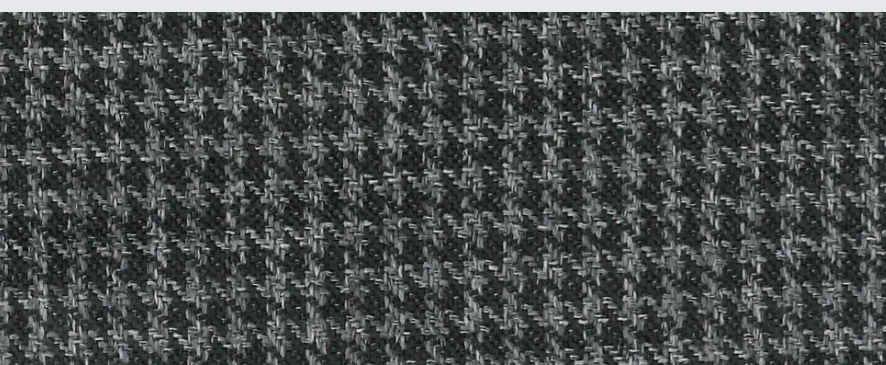
BCTW-24WP029

CMPSTN : 100% Poly
 DESCRIPTION : T280D*T280D
 WIDTH/WEIGHT : 57" 250SQM
 FINISH : P/D
 REMARK : Melange , Jacquard



BCTW - 24WD007

CMPSTN : 100% Poly
 DESCRIPTIO : T300D * T300D
 WIDTH/WEIGHT : 59" 230SQM
 FINISH : P/D
 REMARK : Two-tone . Jacquard



BCTW-24WD016

CMPSTN : 100% Poly
 DESCRIPTION : T300D * T300D
 WIDTH/WEIGHT : 57" 335GSM
 FINISH : P/D + W/R
 REMARK : Two-Tone . Jacquard



BCTW-24WD022

CMPSTN : 100% Poly
 DESCRIPTION : T300D * T300D
 WIDTH/WEIGHT : 58" 230GSM
 FINISH : P/D
 REMARK : Two-Tone



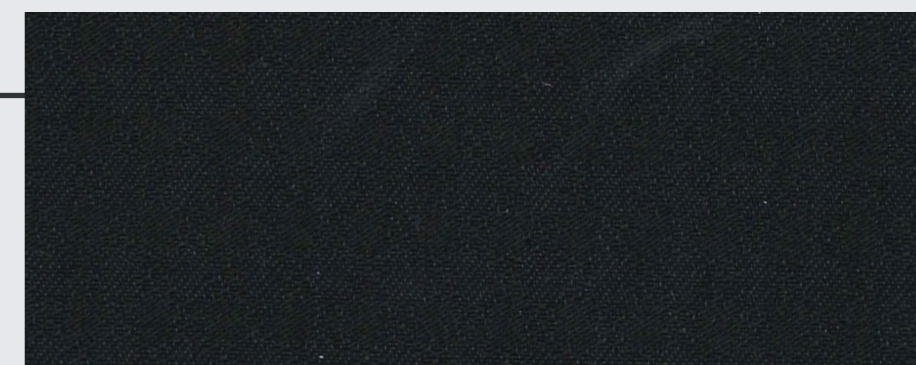
BCTW-24WK001

CMPSTN : 65% Poly + 24% Cotton
 11% Graphene
 WIDTH/WEIGHT : 59" 170SQM
 FINISH : PU
 REMARK : Two-tone , melange



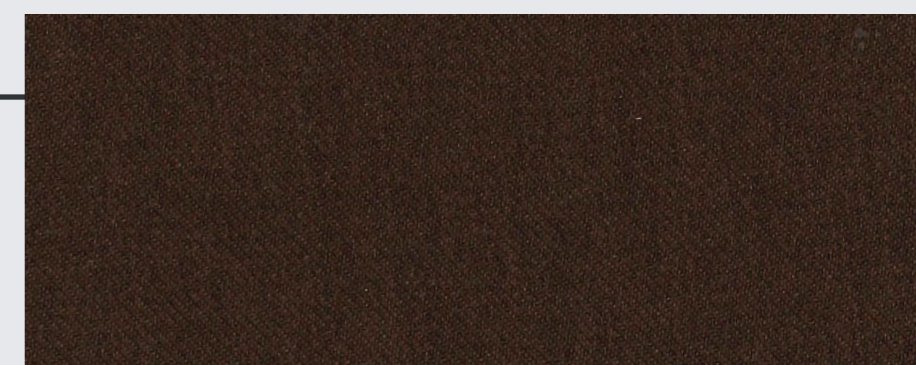
BCTW - 24WP004

CMPSTN : 100% Poly
 DESCRIPTION : T150D * T150D
 WIDTH/WEIGHT : 57" 198SQM
 FINISH : P/D
 REMARK : Jacquard



BCTW-24WP006

CMPSTN : 100% Poly
 DESCRIPTION : T200D * T300D
 WIDTH/WEIGHT : 57" 235SQM
 FINISH : P/D
 REMARK : Jacquard



BCTW-24WP020

CMPSTN : 100% Poly
 DESCRIPTION : T180D * T180D
 WIDTH/WEIGHT : 58" 170SQM
 FINISH : P/D
 REMARK : Twill

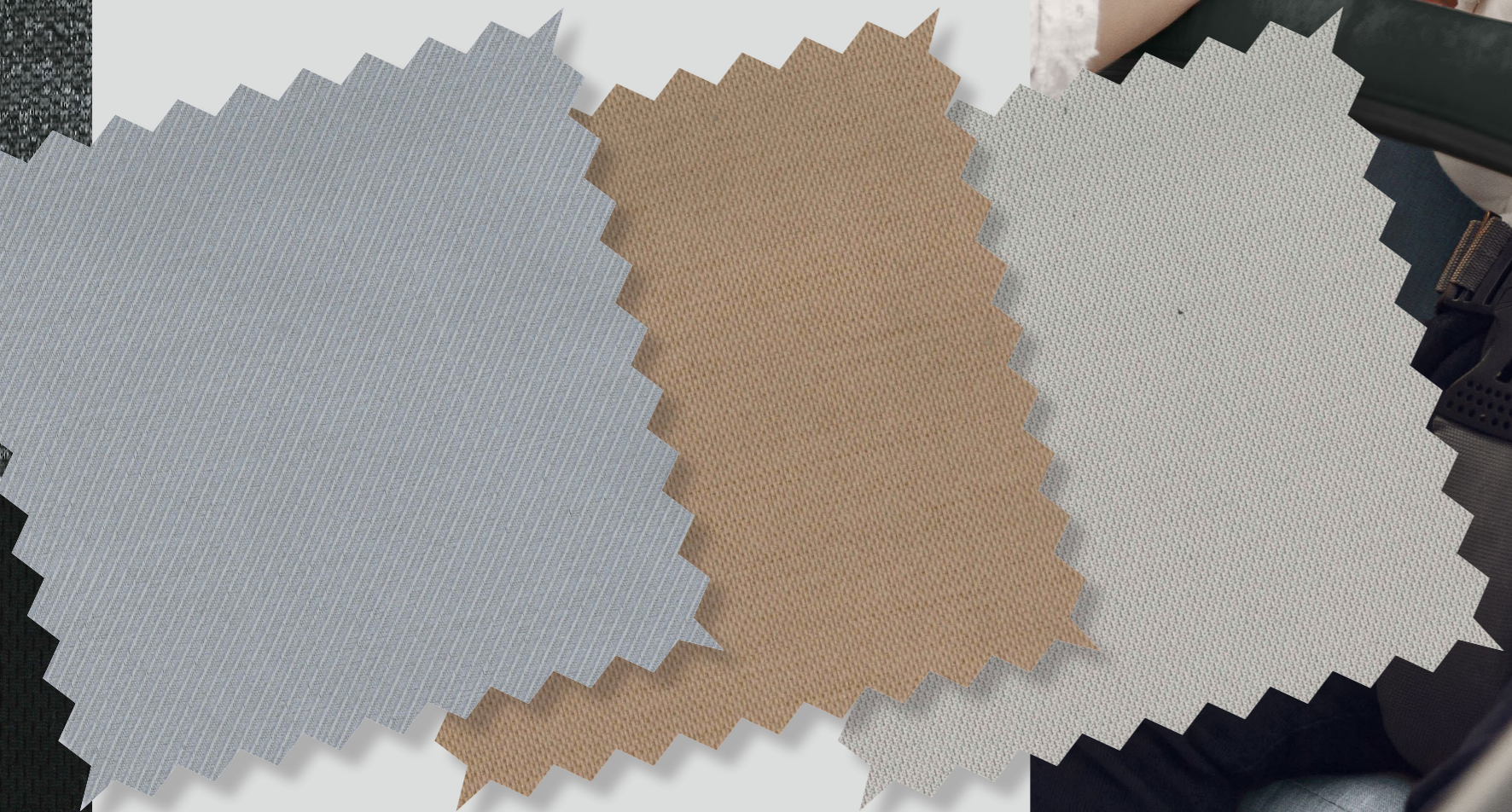


YCTW - 24WE015

CMPSTN : 100% Recycle Poly
 DESCRIPTION : RE-T300D * RE-T300D
 WIDTH/WEIGHT : 60" 180SQM
 FINISH : P/D
 REMARK : Twill

Revolutionary Chem-Free PU-coated Fire-retardant Fabrics

Yu-City fabrics comply with global green chemistry laws and regulations regarding non-hazardous and safe chemicals, such as "Assembly Bill No.2998 Consumer Products: Flame Retardant Materials" of California Legislative Information in 2020, the European Commission's "Toy Safety Regulation" in 2023 as well as related FMVSS No.302 into series of PU-coated fabrics to resolve the issue of hazardous chemicals and Fire-retardant used in textiles.





BCTW-23WP055

CMPSTN : 100% Poly
DESCRIPTION : T150D*T150D
WIDTH/WEIGHT : 58" 150SQM
FINISH : P/D
REMARK : Two-tone & 302 FR FREE



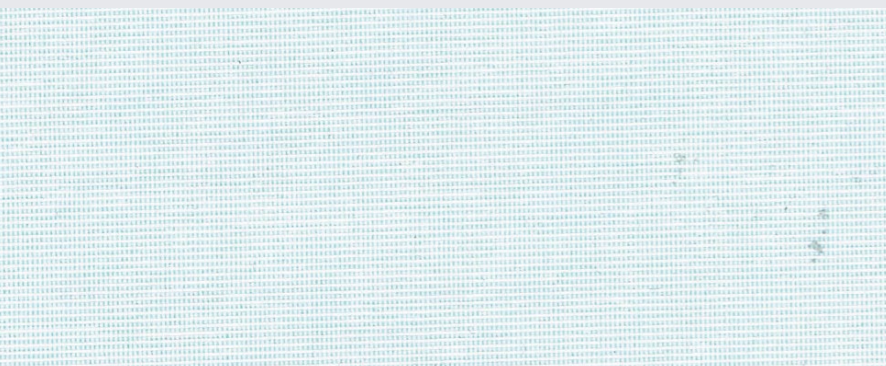
BCTW-23WP057

CMPSTN : 100% Poly
DESCRIPTION : T150D*T300D
WIDTH/WEIGHT : 58" 170SQM
FINISH : P/D
REMARK : Two-tone & 302 FR FREE



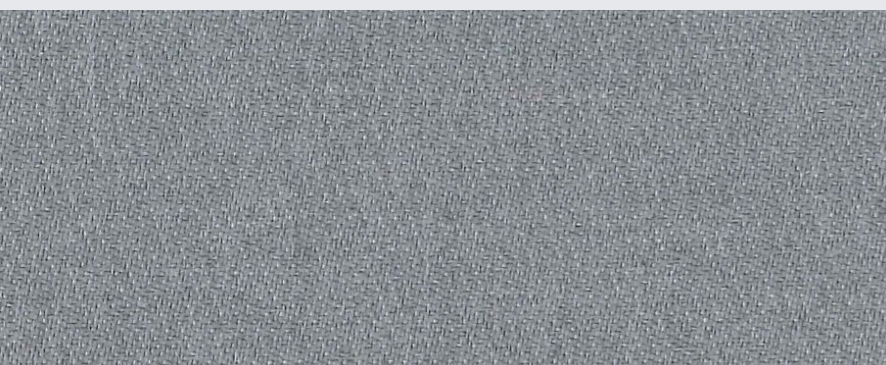
BCTW-24WP015

CMPSTN : 100% Poly
DESCRIPTION : T600D*T600D
WIDTH/WEIGHT : 57" 256SQM
FINISH : P/D + PU*1
REMARK : 302 FR FREE



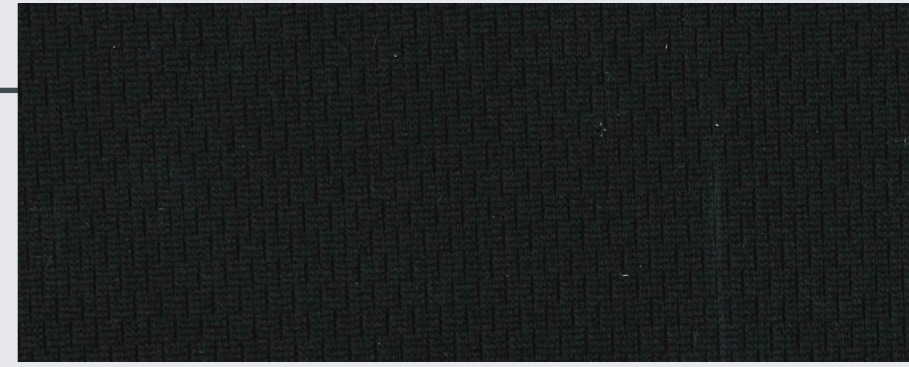
YCTW-24WE007

CMPSTN : 100% Recycle Poly & CD
DESCRIPTION : RE-T150D * RE-T150D+ RE-T/CD180D
WIDTH/WEIGHT : 61" 153SQM
FINISH : P/D
REMARK : Two-tone & 302 FR FREE



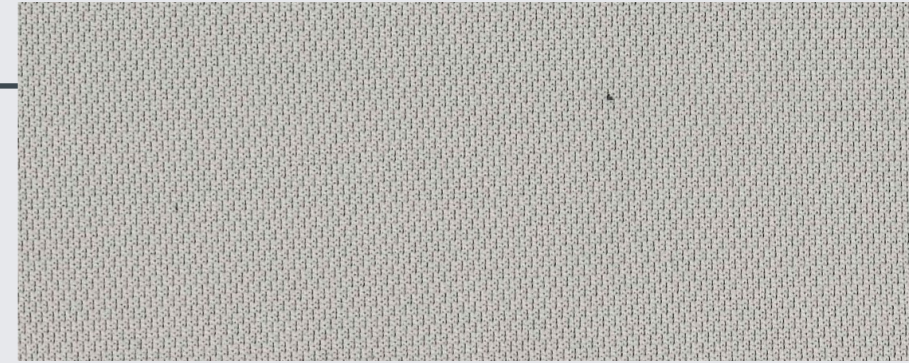
YCTW-23WD033

CMPSTN : Poly / CD
DESCRIPTION : T/CD180D * T/CD180D + T150D
WIDTH/WEIGHT : 61" 187SQM
FINISH : P/D
REMARK : Wool Like & 302FR Free



YCTW-23KE150

CMPSTN : 100% Recycle Poly
DESCRIPTION : RE-T100D + RE-T75D
WIDTH/WEIGHT : 60" 146SQM
FINISH : P/D
REMARK : 302 FR FREE



YCTW-23KE152

CMPSTN : 100% Recycle Poly
DESCRIPTION : RE-T150D + RE-T75D
WIDTH/WEIGHT : 60" 243SQM
FINISH : P/D
REMARK : 302 FR FREE



YCTW-23KE153

CMPSTN : 100% Recycle Poly
DESCRIPTION : RE-T100D * RE-T75D
WIDTH/WEIGHT : 60" 160SQM
FINISH : P/D
REMARK : 302 FR FREE , melange



YCTW-23KE151

CMPSTN : 100% Recycle Poly
DESCRIPTION : RE-T150D + RE-T100D
WIDTH/WEIGHT : 60" 250SQM
FINISH : P/D
REMARK : 302 FR FREE



YCTW-21KP002

CMPSTN : 100% Poly
DESCRIPTION : T150D * T75D
WIDTH/WEIGHT : 58" 270SQM
FINISH : P/D
REMARK : Two-tone & 302 FR FREE



24WP035



24WP042



24WP043

Dope Dye Fabric

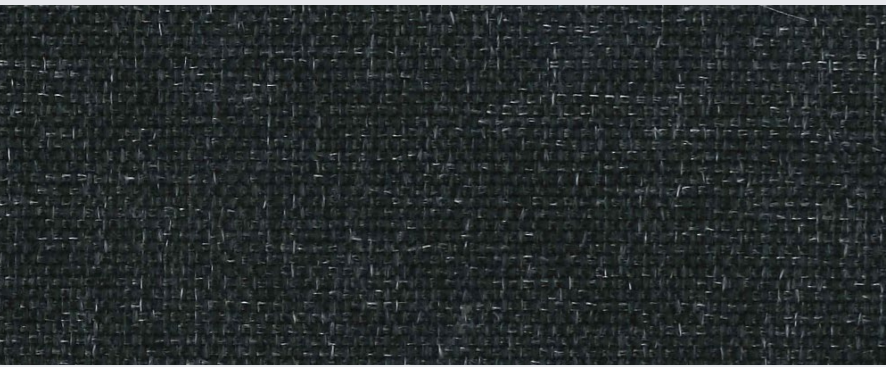
Pioneering Eco-Friendly Fashion with Dope Dye Yarn Innovatio

Fashion and environmental sustainability go hand in hand. YU-City not only brings you exquisite Dope Dye Yarn technology but also a commitment to caring for our planet. By coloring yarn during the manufacturing process, we eliminate the need for dyeing during fabric production, reducing our environmental footprint and conserving precious resources. Our Dope Dye fabrics not only boast exceptional colorfastness but also offer a luxurious feel reminiscent of wool, along with the high-quality Melange color effect. Choose us to lead the fashion trend together and contribute to environmental conservation efforts

24WP031



24WP035
24WP057



BCTW-24WP032

CMPSTN : 100% Poly
 DESCRIPTION : T620D*T620D
 WIDTH/WEIGHT : 59" 220SQM
 FINISH : Dope dye
 REMARK : melange



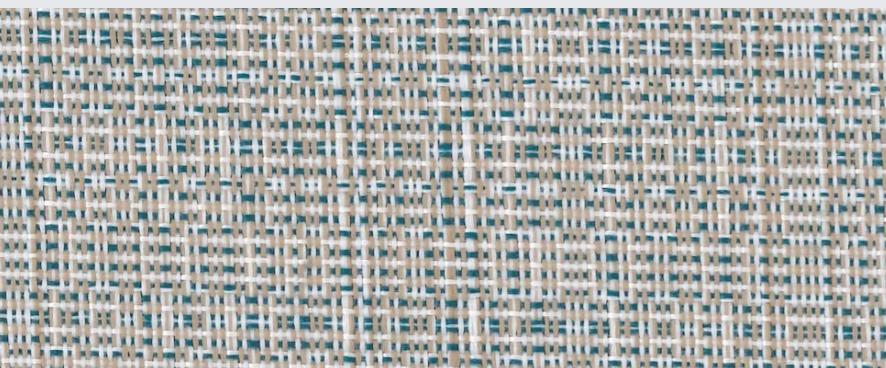
BCTW-24WP034

CMPSTN : 100% Poly
 DESCRIPTION : T1200D*T1200D
 WIDTH/WEIGHT : 59" 300SQM
 FINISH : Dope dye , Brushed coating
 REMARK :



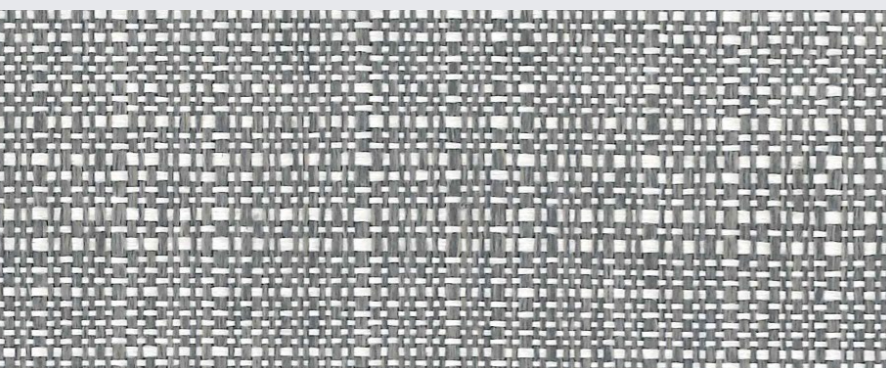
BCTW-24WP035

CMPSTN : 100% Poly
 DESCRIPTION : T610D*T610D
 WIDTH/WEIGHT : 59" 275SQM
 FINISH : Dope dye
 REMARK : Two-tone



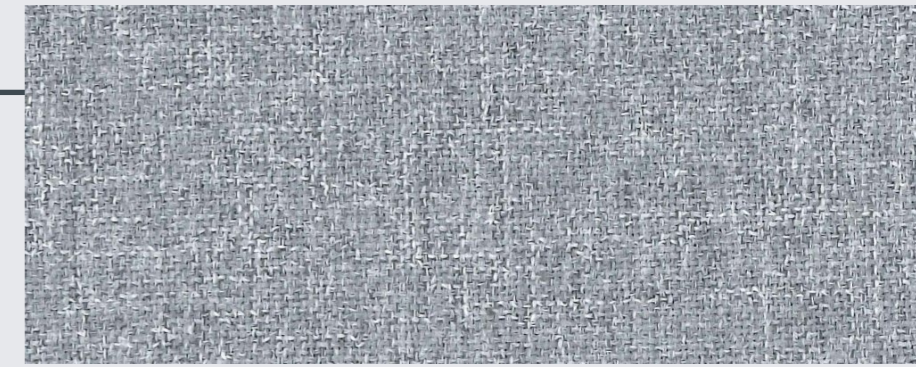
BCTW-24WP036

CMPSTN : 100% Poly
 DESCRIPTION : T610D*T610D
 WIDTH/WEIGHT : 59" 275SQM
 FINISH : Dope dye
 REMARK : Three-tone



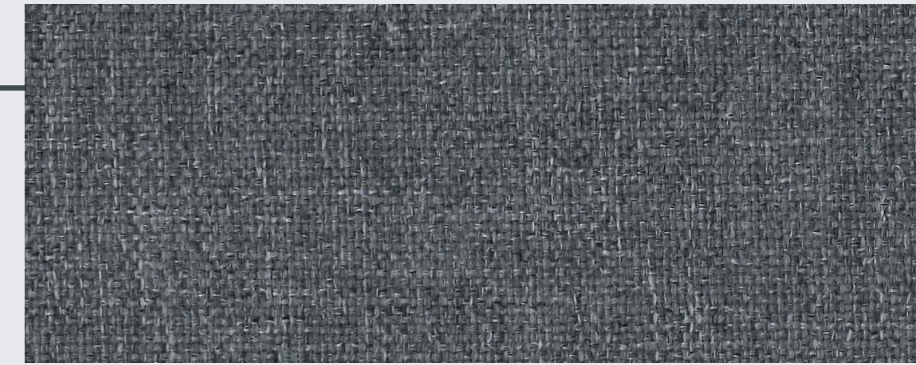
BCTW-24WP038

CMPSTN : 100% Poly
 DESCRIPTION : T620D*T1240D
 WIDTH/WEIGHT : 59" 220SQM
 FINISH : Dope dye
 REMARK : Two-tone



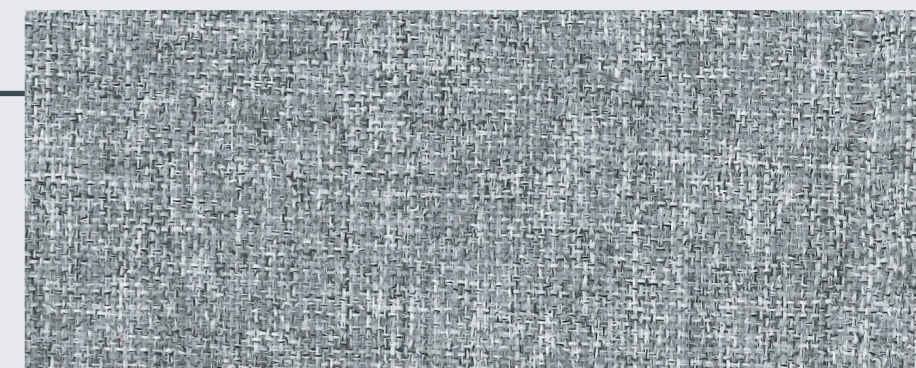
BCTW-24WP040

CMPSTN : 100% Poly
 DESCRIPTION : T460D*T460D
 WIDTH/WEIGHT : 59" 200SQM
 FINISH : Dope dye , Brushed coating
 REMARK : melange



BCTW-24WP044

CMPSTN : 100% Poly
 DESCRIPTION : T730D*T730D
 WIDTH/WEIGHT : 59" 220SQM
 FINISH : Dope dye , Brushed coating
 REMARK : melange



BCTW-24WP047

CMPSTN : 100% Poly
 DESCRIPTION : T620D*T620D
 WIDTH/WEIGHT : 59" 220SQM
 FINISH : Dope dye , Brushed coating
 REMARK : melange



BCTW-24WP048

CMPSTN : 100% Poly
 DESCRIPTION : T480D*T800D
 WIDTH/WEIGHT : 59" 220SQM
 FINISH : Dope dye , Brushed coating
 REMARK : melange



BCTW-24WP058

CMPSTN : 100% Poly
 DESCRIPTION : T500D * T500D
 WIDTH/WEIGHT : 58" 260SQM
 FINISH : Dope dye
 REMARK :

Advisory Support

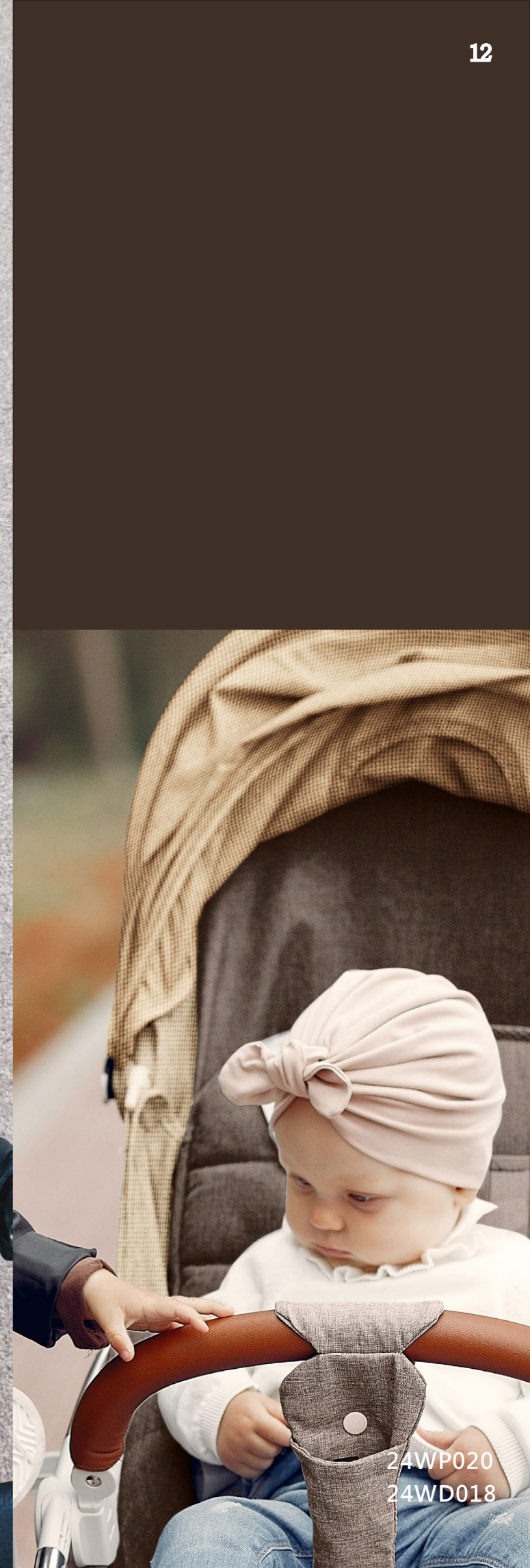
We share the latest industrial trends with our clients. We are capable of product marketing, story telling and business researching. Being a supplier is not our goal. What we are looking for is to be a part of your team. This is more than one-stop service, we cover all.

Full Services

We share the latest industrial trends with our clients. We are capable of product marketing, story telling and business researching. Being a supplier is not our goal. What we are looking for is to be a part of your team. This is more than one-stop service, we cover all.



24WP058
24WP039



24WP020
24WD018



Yu-City Not Just Fabric, But Design

游城實業股份有限公司

YU-CITY IND. CO., LTD.

24158 新北市三重區新北大道二段 260 號 12 樓

12F, No. 260 Sec. 2, New Taipei Blvd., Sanchong District

New Taipei City, Taiwan (R.O.C.)

TEL: +886-2-29953199

FAX : +886-2-29959918



Yu-City



BLESSCOME