



STROLLER — SELECTION

Yu-City Fabric Sample



23KK022

Jacquard Fabric

Say goodbye to ordinary and embrace the luxury fashion of grand jacquard fabric!

Fashion is an ever-evolving journey, and it's the perfect choice for you and your baby's stroller! With grand jacquard fabric, you will always stand out with a unique charm in any situation.

Our wide selection of grand jacquard fabric patterns caters to your various design needs, allowing you to showcase your diverse and captivating personality.

We always prioritize quality, using premium materials to ensure the comfort and durability of grand jacquard fabric. Each piece of fabric is meticulously crafted with exquisite workmanship, providing you with an unparalleled visual feast.



23WP065



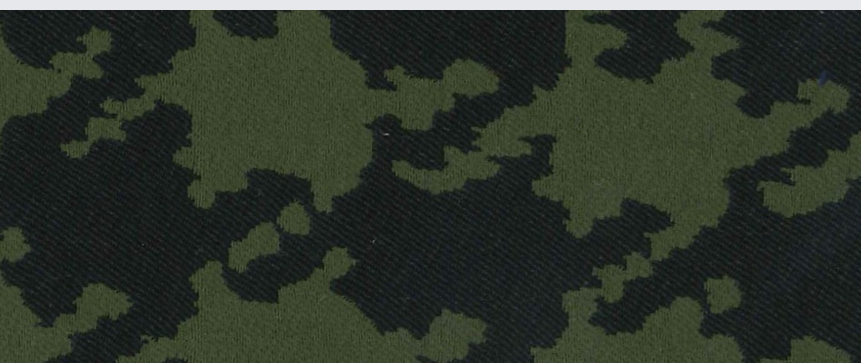
BCTW - 23WP065

CMPSTN : 100% Poly
 DESCRIPTION : T150D
 WIDTH/WEIGHT : 59" 150SQM
 FINISH : PU
 REMARK : Jacquard , Melange



BCTW - 23WK021

CMPSTN : 95% Poly / 5% Wool
 DESCRIPTION : T50D*T75D+T75D+W50'S
 WIDTH/WEIGHT : 57" 145SQM
 FINISH :
 REMARK : Two-tone , Jacquard



BCTW - 23WD027

CMPSTN : 100% Poly
 DESCRIPTIO : T50D * T75D
 WIDTH/WEIGHT : 60" 162SQM
 FINISH :
 REMARK : Two-tone . Jacquard



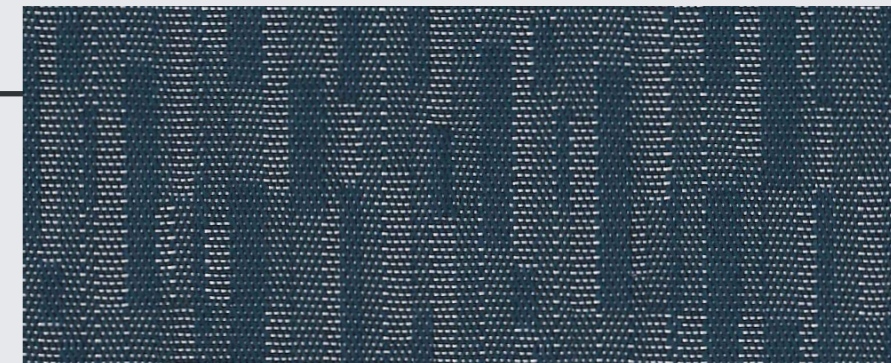
BCTW - 23WD028

CMPSTN : 100% Poly
 DESCRIPTION : T50D + T60D
 WIDTH/WEIGHT : 57" 115G/Y
 FINISH :
 REMARK : Two-Tone . Jacquard



YCTW - 23WD034

CMPSTN : 100% Poly
 DESCRIPTION : T/CD 290D * T/CD290D
 WIDTH/WEIGHT : 59" 90SQM
 FINISH : P/D
 REMARK : Melange, Jacquard



BCTW - 23WP069

CMPSTN : 100% Poly
 DESCRIPTION : T150D+T300D
 WIDTH/WEIGHT : 59" 180SQM
 FINISH : PU
 REMARK : Two-tone , Jacquard



BCTW - 23WP070

CMPSTN : 100% Poly
 DESCRIPTION : T300D
 WIDTH/WEIGHT : 59" 220SQM
 FINISH : P/D
 REMARK : Two-tone , Jacquard



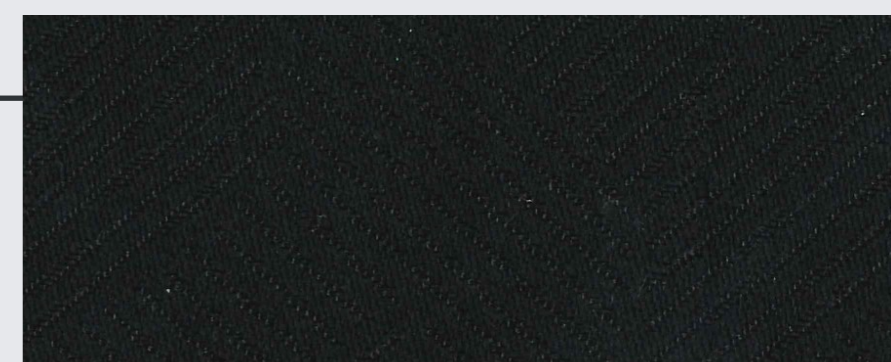
YCTW - 23WN030

CMPSTN : 100% Nylon
 DESCRIPTION : N70D * N200D
 WIDTH/WEIGHT : 59" 165SQM
 FINISH : P/D
 REMARK : Jacquard



YCTW - 23WN031

CMPSTN : 100% Nylon
 DESCRIPTION : N70D * N200D
 WIDTH/WEIGHT : 59" 140SQM
 FINISH : P/D
 REMARK : Jacquard



BCTW - 23WP066

CMPSTN : 100% Poly
 DESCRIPTION : T200D + T300D
 WIDTH/WEIGHT : 60" 190SQM
 FINISH : P/D + PU
 REMARK : WR , Jacquard

Recycle Fabric

Where your style and environmental consciousness perfectly blend.

We deeply understand the importance of environmental protection and are committed to reducing the burden on our beautiful blue planet. Through fabric made from recycled materials, we join together in safeguarding this planet, leaving a cleaner world for the next generation. Each piece of fabric is made from high-quality recycled materials. We rigorously select to ensure you have top-notch texture, maintaining a perfect balance between environmental protection and quality. Green fashion is not just a trend, but a significant stride towards sustainable fashion. By choosing us, you become a leader in green fashion, bringing positive change to the world.



BCTW-23WE080

CMPSTN : 100% Recycle-Poly
DESCRIPTION : Recycle-T75D*Recycle-T150D
WIDTH/WEIGHT : 57" 145SQM
FINISH : P/D
REMARK : Eco-friendly & Recycle

BCTW-23WE081

CMPSTN : 100% Recycle-Poly
DESCRIPTION : Re-T75D * Re-T150D + Re-T150D
WIDTH/WEIGHT : 57" 110SQM
FINISH : P/D
REMARK : Eco-friendly & Recycle

BCTW-23WE080

CMPSTN : 100% Recycle-Poly
DESCRIPTION : Recycle-T75D*Recycle-T150D
WIDTH/WEIGHT : 57" 145SQM
FINISH : P/D
REMARK : Eco-friendly & Recycle

BCTW-23WE081

CMPSTN : 100% Recycle-Poly
DESCRIPTION : Re-T75D * Re-T150D + Re-T150D
WIDTH/WEIGHT : 57" 110SQM
FINISH : P/D
REMARK : Eco-friendly & Recycle

BCTW-23WE082

CMPSTN : 100% Recycle-Poly
DESCRIPTION : Re-T75D * Re-T150D + Re-T150D
WIDTH/WEIGHT : 57" 145SQM
FINISH : P/D
REMARK : Eco-friendly & Recycle

BCTW-23WE078

CMPSTN : 100% Recycle-Poly
DESCRIPTION : Recycle-T75D*Recycle-T300D
WIDTH/WEIGHT : 57" 188SQM
FINISH : P/D
REMARK : Eco-friendly & Recycle

BCTW-23WE086

CMPSTN : 100% Recycle-Poly
DESCRIPTION : Recycle-T75D*Recycle-T150D
WIDTH/WEIGHT : 57" 155SQM
FINISH : P/D
REMARK : Eco-friendly & Recycle

BCTW-23WE087

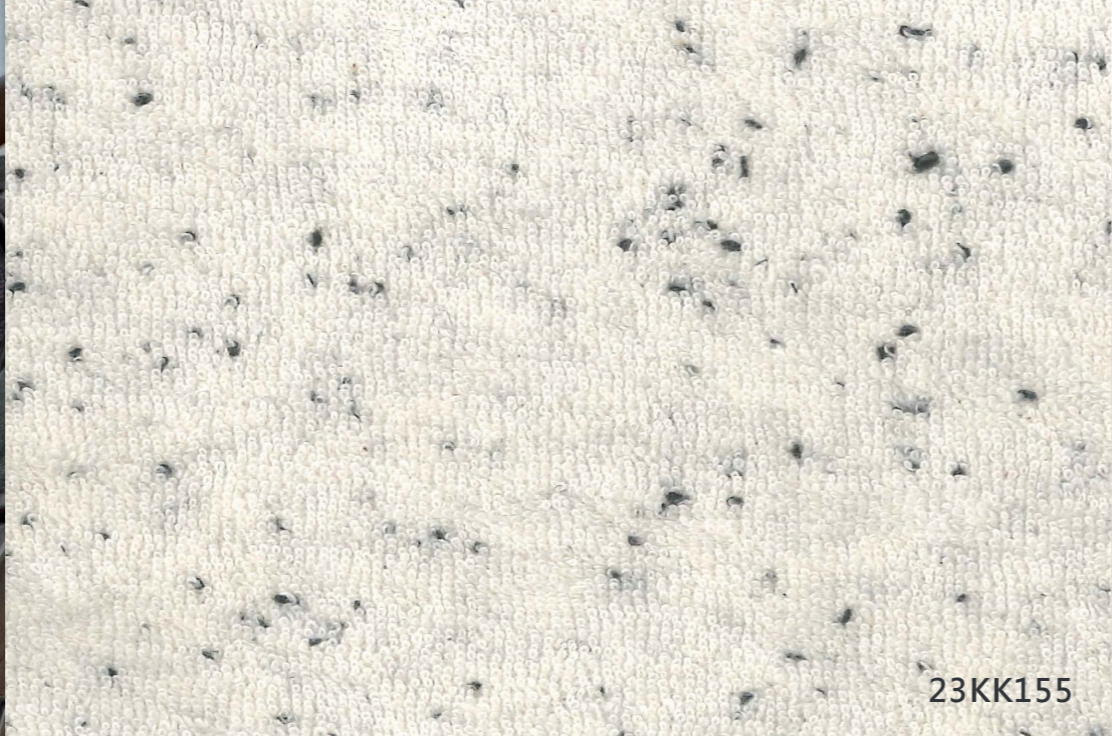
CMPSTN : 100% Recycle-Poly
DESCRIPTION : Recycle-T75D*Recycle-T300D
WIDTH/WEIGHT : 57" 159SQM
FINISH : P/D
REMARK : Eco-friendly & Recycle

BCTW-23WE088

CMPSTN : 100% Recycle--Poly
DESCRIPTION : Recycle-T75D*Recycle-T150D
WIDTH/WEIGHT : 57" 135SQM
FINISH : P/D
REMARK : Eco-friendly & Recycle

BCTW-23WE089

CMPSTN : 100% Recycle-Poly
DESCRIPTION : Recycle-T300D*Recycle-T300D
WIDTH/WEIGHT : 58" 175SQM
FINISH : P/D
REMARK : Eco-friendly & Recycle



23KK155



23KD043

Knitting Fabric

Blissful Baby Time, Embraced by Soft Fabric

We understand that your baby's skin requires special care, which is why we have crafted this fabric specifically for your baby's stroller. This soft-touch fabric is not only a gentle embrace but also seamlessly blends with your brand's design. It has undergone rigorous heavy metal testing, assuring that your baby enjoys the safest and most comfortable stroller experience.



23KP143



23WP009
23KD002

23WP008

Advisory Support

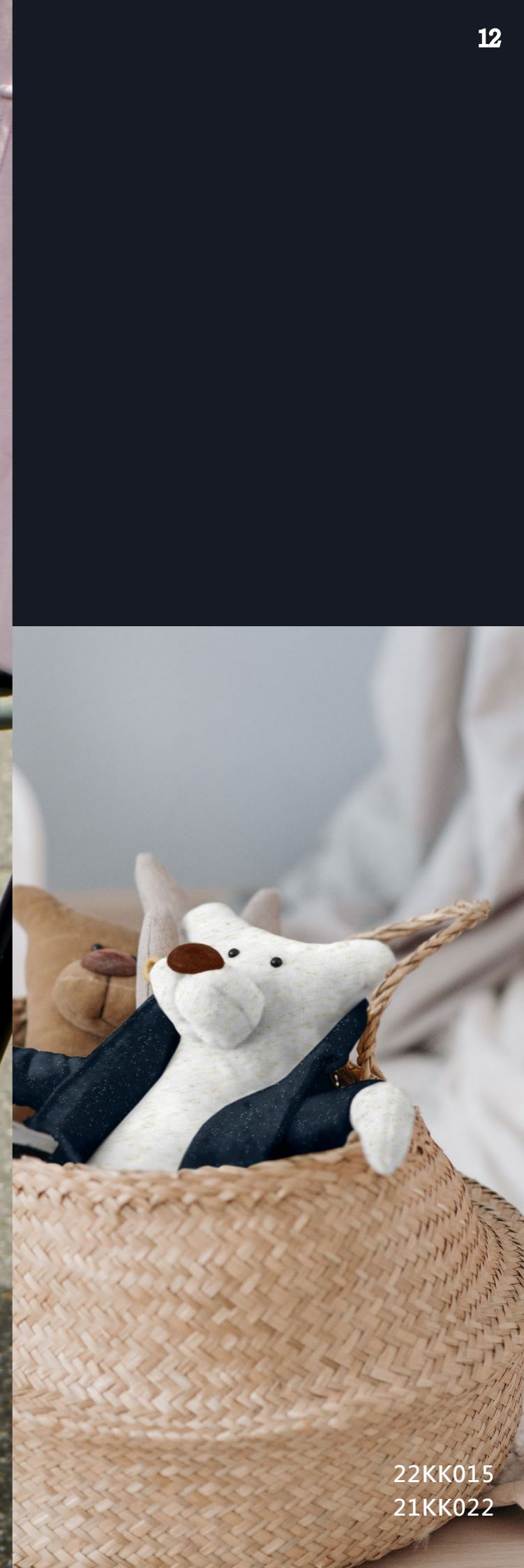
We share the latest industrial trends with our clients. We are capable of product marketing, story telling and business researching. Being a supplier is not our goal. What we are looking for is to be a part of your team. This is more than one-stop service, we cover all.

Full Services

We share the latest industrial trends with our clients. We are capable of product marketing, story telling and business researching. Being a supplier is not our goal. What we are looking for is to be a part of your team. This is more than one-stop service, we cover all.



23WP006
23KK015



22KK015
21KK022



Yu-City Not Just Fabric, But Design

游城實業股份有限公司

YU-CITY IND. CO., LTD.

24158 新北市三重區新北大道二段 260 號 12 樓

12F, No. 260 Sec. 2, New Taipei Blvd., Sanchong District

New Taipei City, Taiwan (R.O.C.)

TEL: +886-2-29953199

FAX : +886-2-29959918

